



SA115H-XX

15W Switching Adapter

Input

Rated Voltage	100 - 240 VAC
Max. Voltage	90 - 264 VAC
Line Frequency	47 - 63 Hz
Current	400mA at 100-240VAC
Configuration	UL-2PIN

Output

Model Name	Voltage	Current	Watt	Eff. (typ.)
SA115H-09	9V	1.7A	15.3W	80%
SA115H-12	12V	1.3A	15.6W	80%

Line Regulation Less than $\pm 2\%$

Load Regulation Less than $\pm 5\%$

Protections OCP, OVP & Short circuit

Ripple & Noise $\leq 150\text{mVp-p}$

Environment

Operating Temp. $0^{\circ}\text{C} - 40^{\circ}\text{C}$

Storage Temp. $-20^{\circ}\text{C} - 80^{\circ}\text{C}$

Operating Humidity 10% - 90% (Non-condensing)

RoHS & WEEE Standard

Reliability

MTBF 50,000 hrs (by MIL-217 Standard)

Safety ITE: UL, cUL, PSE

Others

Package 80 pcs/box

Min. Order 1K pcs/lot

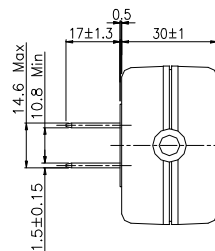
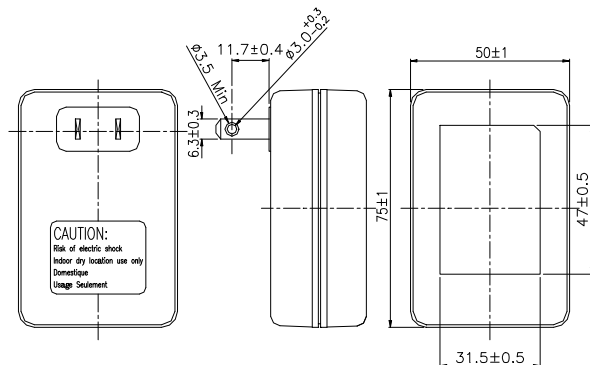
Warranty 1 year

Electrical

Topology	Switching Mode
Hi-Pot	3000 Vac/1sec @ 5mA (primary - secondary)
Leakage Current	$\leq 0.25\text{mA}$, at 264VAC/60Hz
Hold Up Time	$\geq 6\text{mSec}$
Standby Power	≤ 0.3 Watt (As per EPS Consumption Guideline)
EMI	Complies with EMI directives
Energy Star Requirement	EPS 2.0 (Efficiency Level V)

Mechanical

Case Size	75L x 50W x 30H mm
Case Material	Black, 94V-1 or equivalent
Weight	125 ± 10 g
DC Cord	4.92ft



For reference only. For details please contact your local sales representative.